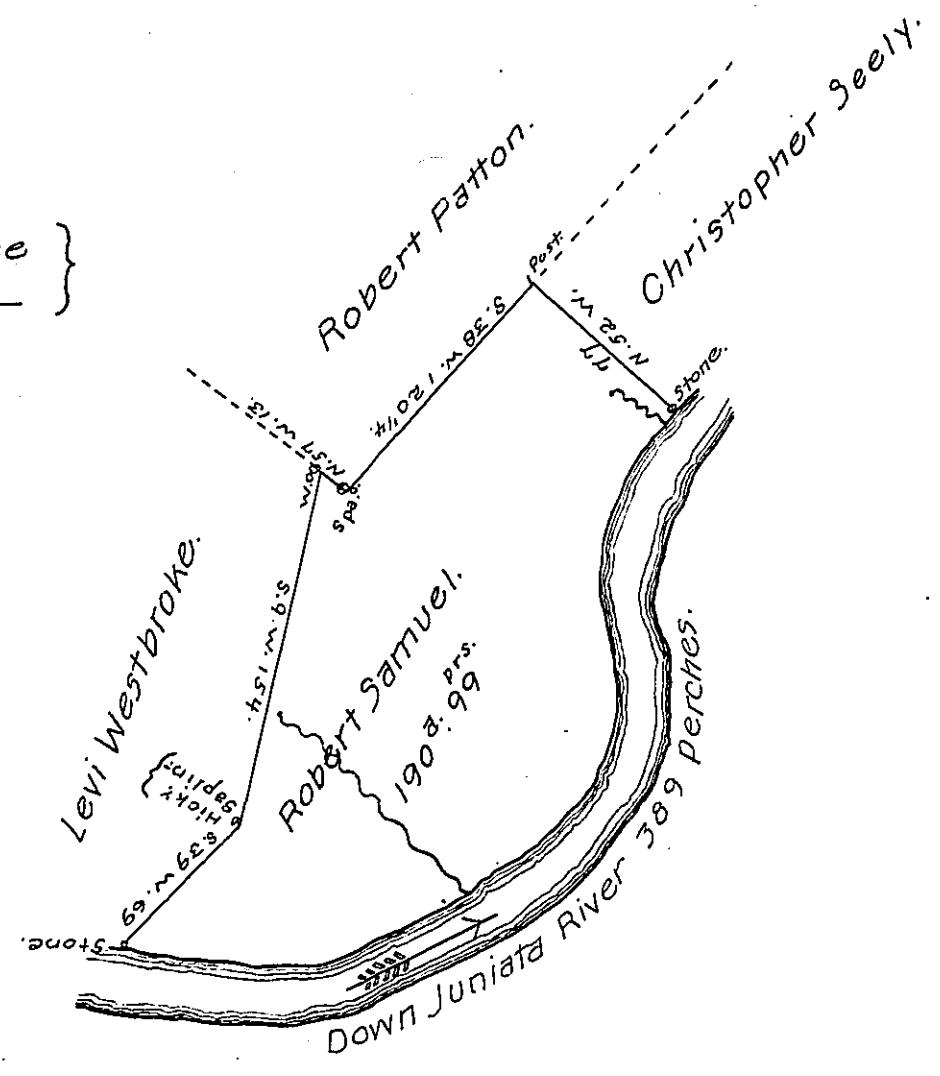


FORM NO 1.

Course & Distance }
Down Juniata. — }

- S. 82 E. 38 1/2
 - N. 78 E. 62 1/2
 - N. 56 E. 58
 - N. 44 1/2 E. 58
 - N. 11 E. 46
 - N. 20 W. 30
 - N. 10 E. 60
 - N. 27 E. 36
-
- 389 p^{rs}.



*Draught of a tract of Land situate in Wayne Township
(formerly Cumberland) now Mifflin County Containing One hundred
and Ninety Acres and 99. perches and the allowance of Six
Per Cent for roads &c. Surveyd April 17th 1805 in pursuance of a War-
rant Granted to Robert Samuel Dated the 2^d day of June 1762.*

W^m William Harris, D.S.

*To Samuel Cochran, Esquire,
Surv^r Gen^l of Pennsylvania. }*

*IN TESTIMONY that the above is a copy of the original remaining on file in
the Department of Internal Affairs of Pennsylvania, made
conformably to an Act of Assembly approved the 16th day of
February, 1833, I have hereunto set my Hand and caused
the Seal of said Department to be affixed at Harrisburg,
this eighth day of May, 1907.*

Henry Houch
Secretary of Internal Affairs.